



Town Hall  
Grille Update  
March 12, 2024

Agenda

- Introduction – John Ols
- Progress of the Committee – Tom Moody
- Financial Considerations – Dave Randall
- Licensing and Permits – Mike Headley
- Volunteer Considerations – Dave Schroeder
- Questions and Comments

## Introduction – John Ols

- Welcome
- Lease termination
- Board Decision
- History of Golf Course
- Club pays expenses

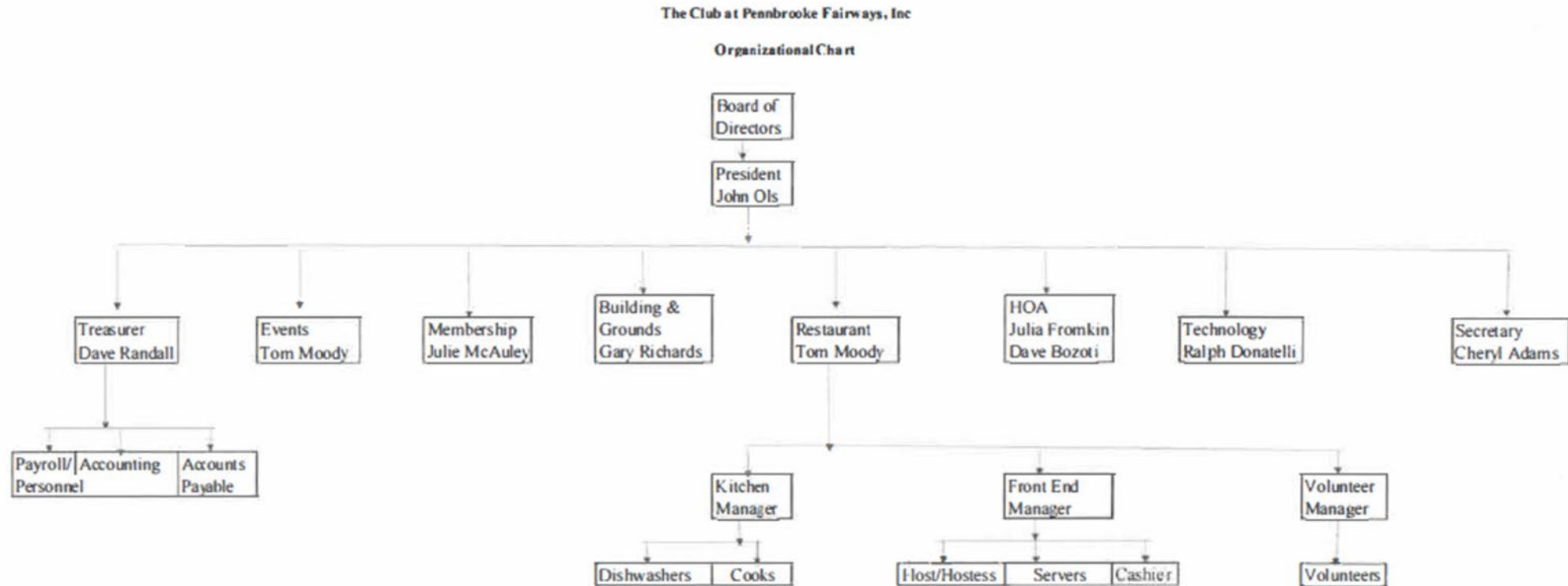
# Residents and Golf course needs

## Goals

- Create a friendly place
- Respect customers and workers
- Reduce food and drink prices

## Volunteers to help us

# Organizational Chart for The Club



## Committee Assignments

Tom Moody – menu,

Mike Headley – permits, licensing and insurance

Dave Schroeder – volunteers

Dave Randall – financial, personnel

Denise Randall, Janet Moody, Karen Keim, Marsha Headley –  
decorating, logo, minor repairs and painting

Ray Michaud, – major repairs and remodeling

## Grille Plan

Discussed 4 options:

1. Do nothing – status quo
2. Continue with RFP's
3. Stand alone A: The board would assume the management of the restaurant. The restaurant would start small with little remodeling or construction changes. Expansion would occur as we are able to facilitate growth.
4. Stand alone B: Same as Stand alone A except this option would require remodeling to move pro shop and take down walls.

## Committee elected Stand alone A (Option 3)

- Tailor/Cater operation to PB community and golfers
- Control prices
- Control menu
- Control days and hrs. of operation
- Understanding Restaurant vs. Grille
- Return facility as a point of destination with good food, competitive prices and a social place to visit



## Financial Considerations – Dave Randall

- ❑ Restaurant expenses paid by the club
- ❑ Club will lose the lease payment
- ❑ Club will have the opportunity to offset all overhead expenses
- ❑ Menu pricing can be controlled through restaurant profitability

**The Club at Pennbrooke Fairways, Inc.  
The Grille - Financial Summary**

Paid by the Club		Paid by Lessee	
Electricity		Rent	1,500
Water		Trash	180
Building and contents insurance		Propane	200
Property taxes		Cable/Internet	150
Personal property taxes			
Trash		Total	2,030
Breakeven average daily meals			25.04

## Progress of the Committee

- Determined the liquor license/restaurant license
- Determine insurance requirements
- Determined the hours / days of operation
- Determine the POS system
- Determine the menu
- Compiled suggestions from golf group leaders
- Developed logo

## Progress of the Committee (con't)

- Determined uniforms
- Determined name badges
- Staffing announcements
- Chandelier has been re-installed
- Checklists being developed
- Credit card system established
- Determined accounting procedures

**The Club at Pennbrooke Fairways, Inc.**  
**Proposed Hours of Operation**

**Beginning**

	<u>Sunday</u>	<u>Monday</u>	<u>Tuesday</u>	<u>Wednesday</u>	<u>Thursday</u>	<u>Friday</u>	<u>Saturday</u>
Limited Service	closed	7-10 am	7-10 am	7-10 am	7-10 am	7-10 am	7-10 am
Full Menu	closed	10am - 6pm	10am - 6pm	10am - 6pm	10am - 6pm		10am - 6pm
Carry Out/Delivery	closed	4pm - 6pm	4pm - 6pm	4pm - 6pm	4pm - 6pm	4pm - 7pm	4pm - 6pm
Fish Fry Menu	closed					10am - 7 pm	
Happy Hour	closed	4pm - 6pm		4pm - 6pm	4pm - 6pm		
<b><u>Future</u></b>							
Trivia					4pm - 7pm		
Karaoke				5pm - 7pm			
Brunch	10am - 2pm						

## Volunteer Considerations – Dave Schroeder

- Why the need for volunteers
- Volunteer form
- Request for volunteers

Questions and Comments